



# PHOENIX Business Journal

presents

1912 ARIZONA 2012

**100**  
*Celebrating*  
**YEARS**  
**AND BEYOND...**

Sponsors:



**Alliance Bank**  
OF ARIZONA

A division of Western Alliance Bank, Member FDIC

WESTERN ALLIANCE BANK IS AN AFFILIATE OF WA

GOOD YEAR TIRES



**ARIZONA BUILDERS' ALLIANCE**

Building Excellence

**Jennings Strouss**

ATTORNEYS AT LAW

# Arizona's evolution

Arizona has a history that stretches prior to its statehood in 1912. In the 1800s and early 1900s, the business community gained a foothold and various associations and chambers sprang up. Here is a look at Arizona's significant events leading up to and during the first 25 years of statehood.

## Pre-statehood

**1858**  
Wells Fargo, the state's largest banking and financial services provider, appears in the Arizona territory.

**1877**  
The city of Tucson incorporates in Pima County.

**1878**  
Mountain States Telephone and Telegraph, the forerunner to Qwest Communications International opens.

**1879**  
*Arizona Daily Star* newspaper is founded in Tucson.

**1880**  
• St. Mary's Hospital is founded.  
• Maricopa Integrated Health System begins operations.

**1881**  
• Phoenix Bakery (now Holsum Bakery Inc.) is established in Phoenix. Today, Holsum is among Arizona's top five nonelectronics manufacturers, employing almost 500.  
• The city of Phoenix incorporates.  
• The city of Tombstone incorporates. (Later that year, the famous gunfight at the O.K. Corral takes place.)

**1882**  
The *Prescott Daily Courier* is founded.

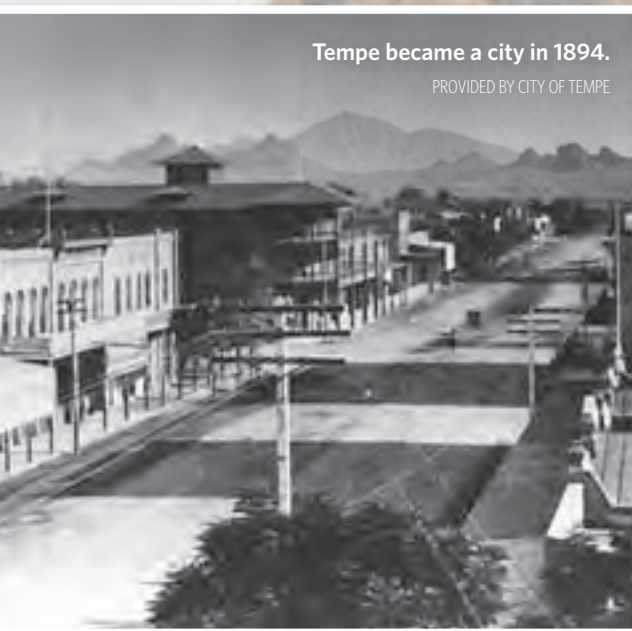
**1883**  
Prescott and Mesa are incorporated.

**1885**  
• Tempe Normal School (now Arizona State University) is founded.  
• The University of Arizona is established in Tucson.  
• The Arizona Canal is completed by a collective of farmers who later formed the Salt River Project.  
• Law firm Fennemore Craig PC is founded in Phoenix.

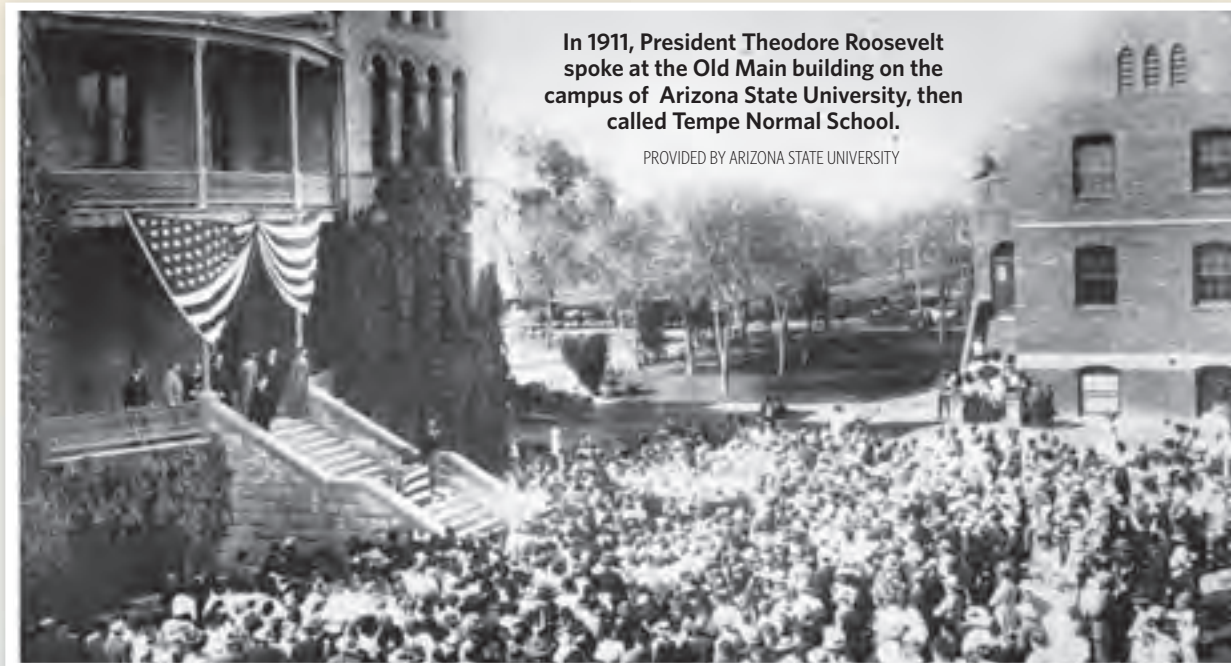
**1886**  
Phoenix Illuminating Gas and Electric Co., which would become Arizona Public Service Co., is founded.

**1888**  
The Greater Phoenix Chamber of Commerce starts up.

**1890**  
• *The Arizona Republican* (now *The Arizona Republic*) begins publication.



Tempe became a city in 1894.  
PROVIDED BY CITY OF TEMPE



In 1911, President Theodore Roosevelt spoke at the Old Main building on the campus of Arizona State University, then called Tempe Normal School.

PROVIDED BY ARIZONA STATE UNIVERSITY

**1891**  
• The Flagstaff Chamber of Commerce is formed.  
• The *Evening Weekly Free Press* (later renamed the *Mesa Tribune*, then the *East Valley Tribune*) is founded.

**1892**  
• The Arizona Medical Association and Maricopa County Medical Association are founded.  
• First American Title Insurance Co. starts operations.  
• Valley of the Sun YMCA opens its doors.

**1893**  
Nogales becomes the first Arizona border town to incorporate.

**1894**  
Tempe and Flagstaff become cities.

**1896**  
• The Tucson Metropolitan Chamber of Commerce is formed.  
• Florence Crittenton Services Inc., a nonprofit group that helps young women, starts its Valley operations.

**1897**  
• Joseph Greenhut and Deloss Brown file Peoria's town site with the Maricopa County Recorder's Office, naming the settlement after their hometown of Peoria, Ill.  
• Rosenzweig's Jewelry opens.

**1899**  
• Gila Valley Bank establishes its roots in Arizona. Today, as JPMorgan Chase, it is the second-largest financial services provider operating in the state.  
• Thatcher and Jerome incorporate as Arizona cities.

**1900**  
Florence and Winslow incorporate.

**1901**  
Safford and Williams incorporate.

**1902**  
Bisbee incorporates.

**1903**  
The Salt River Valley Water Users' Association (now Salt River Project) is founded.

**1905**  
• Work begins on the Roosevelt Dam, which created the major water storage area for much of the Valley's farmland.  
• Carr Tenney Mortuary in Tempe begins operations.  
• Douglas incorporates.

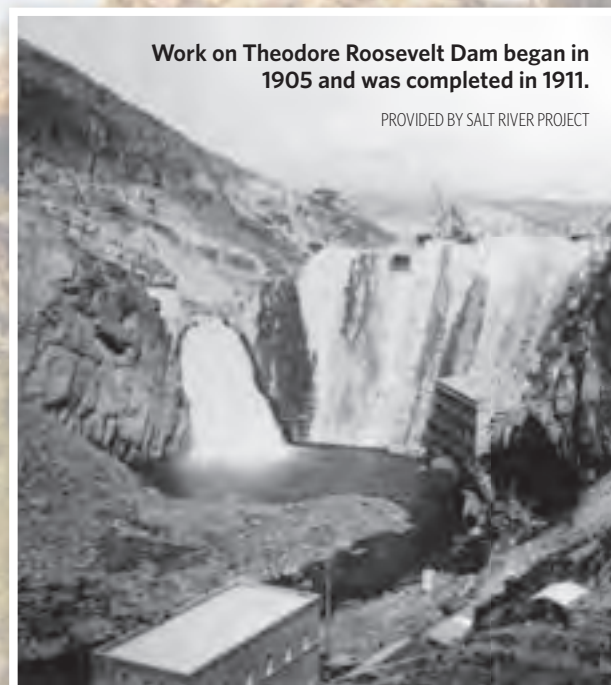
**1906**  
• Arizona News Service, the original publisher of the *Arizona Capitol Times*, begins operations.

**1907**  
• St. Luke's Medical Center in Phoenix begins treating patients.  
• Globe incorporates.

**1908**  
• O'Neil's Printing opens its first shop in Phoenix.  
• The Tempe Chamber of Commerce starts up.

**1909**  
Wickenburg and Clifton incorporate.

**1910**  
Glendale incorporates.



Work on Theodore Roosevelt Dam began in 1905 and was completed in 1911.

PROVIDED BY SALT RIVER PROJECT

**1911**  
• Theodore Roosevelt Dam is completed.  
• StandardAero, one of the largest private companies in Arizona, is founded as an airplane repair operation.  
• Good Samaritan Hospital opens in Phoenix.

**1912**  
• Arizona is granted statehood on Feb. 14.  
• The *Casa Grande Dispatch* is founded.  
• George W.P. Hunt becomes Arizona's first governor.  
• The University of Arizona has 254 students enrolled, Tempe Normal School has 324 and Northern Arizona Normal School (now Northern Arizona University) has 136.  
• The Chandler Chamber of Commerce opens.  
• The Mesa Chamber of Commerce opens.  
• Babbitt Ford is founded in Flagstaff.

**1914**  
• The Arizona Bar Association begins representing attorneys around the state.  
• Yuma incorporates.

**1915**  
• The USS Arizona, a U.S. Navy battleship honoring the state, is launched.  
• Insurance brokerage the Mahoney Group opens.  
• Willcox and Casa Grande incorporate.

**1917**  
• The Zimmerman telegram is sent by Germany to Mexico, offering to give Arizona back to Mexico as a territory for its help in the war. This became one of the triggers that led to the U.S. becoming involved in World War I.  
• The Bisbee deportation occurs: About 1,300 miners striking the Phelps Dodge Corp. were kidnapped by vigilantes, herded onto cattle cars and shipped to Hermanas, N.M., in an effort to break the strike.  
• Wilhelm Automotive, an auto repair shop, opens in Peoria.  
• Holbrook incorporates.

**1918**  
• The Arizona Nurses Association begins representing caregivers at the state's fledgling hospitals.  
• The Organization House, the first building on what later became the Wigwam Resort, opens.  
• Miami incorporates.

**1919**  
• The Grand Canyon National Park Act passes, creating the more than 1,900-square-mile park that now draws more than 5 million visitors a year.  
• The Peoria Chamber of Commerce is founded.

**1920**  
Gilbert and Chandler incorporate.

**1921**  
• The El Zaribah Shrine Auditorium opens in Phoenix.  
• John and Geneva LeSueur of Mesa donate their home to create the community's first hospital, with six beds. Banner Health's roots trace back to this donation.  
• Construction and contracting company Johnson Carlier Inc. starts operations in Phoenix.



The Wrigley Mansion was built in 1932.

FILE PHOTO

**1922**  
Shamrock Dairy is founded in Tucson by Irish immigrants W.T. McClelland and his wife, Winifred. Today, Shamrock is one of the largest family-owned dairies in the Southwest.

**1923**  
Southside District Hospital (now Banner Desert Medical Center) is established in Mesa.

**1924**  
• Horizon Moving Systems is founded by the Dusenberry family.  
• Benson incorporates.

**1925**  
• Mormon Flat Dam is finished, creating Canyon Lake along the Salt River.  
• Tempe Normal School becomes Tempe State Teachers College.  
• Northern Arizona Normal School becomes Northern Arizona State Teachers College.

**1927**  
• Horse Mesa Dam is finished along the Salt River.  
• The American Automobile Association starts its Arizona Chapter.

**1928**  
• The Hotel Westward Ho opens its doors. At 208 feet, it remained the tallest building in the city for 30 years.  
• The Hotel San Carlos opens its doors, becoming a draw for Hollywood and political celebrities.  
• The Security Building opens on Central Avenue.  
• Tempe State Teachers College becomes Arizona State Teachers College.

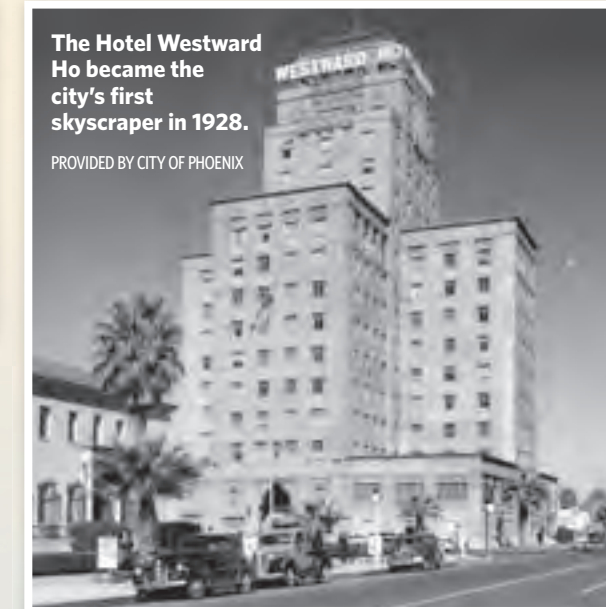
**1929**  
• The Heard Museum, dedicated to Native American cultures, opens on Central Avenue in Phoenix.  
• The Arizona Biltmore Resort & Spa opens as Phoenix's first resort.  
• The Luhrs Tower opens in downtown Phoenix.

• The Orpheum Theatre opens.  
• Sundt Construction Co. moves its headquarters to Phoenix.  
• The Wigwam Resort opens with 24 guest rooms.  
• Northern Arizona Teachers College becomes Arizona State Teachers College.  
• Tolleson and Buckeye incorporate.



W.T. and Winifred McClelland founded Shamrock Dairy in 1922.

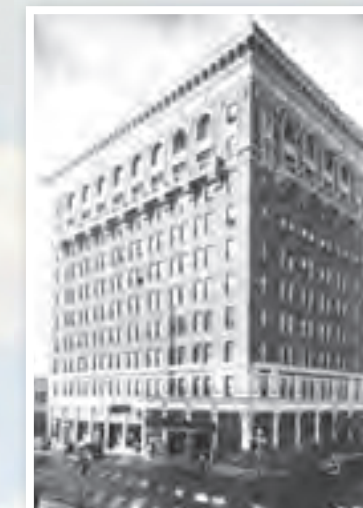
FILE PHOTOS



The Hotel Westward Ho became the city's first skyscraper in 1928.

PROVIDED BY CITY OF PHOENIX

**1930**  
• Stewart Mountain Dam is completed, creating Saguaro Lake.  
• The Wigwam Resort launches its first nine holes of golf.



PROVIDED BY CITY OF PHOENIX

Luhr's Tower opened in 1929.

**1932**  
• The Wrigley Mansion is built by chewing-gum magnate William Wrigley Jr.

**1933**  
Milking machines are used for the first time by Shamrock Farms.

**1935**  
• Hoover Dam is completed, creating a link between Arizona and Nevada and a way to protect Colorado River water for the Southwestern states.  
• Sky Harbor Airport is purchased by the city of Phoenix for \$100,000 from the Acme Investment Co.

**1936**  
The Salt River Project Agricultural Improvement and Power District is formed, the second of two entities that today comprise SRP.



PROVIDED BY ARIZONA BILTMORE

The Arizona Biltmore Resort & Spa became the Valley's first resort in 1929.



Sky Harbor Airport was bought by the city of Phoenix in 1935.

PROVIDED BY PHOENIX AIRPORT MUSEUM